

# Thermal Radiometry Alarm Heat Sensing Camera POD

The Mobotix Thermal sensor  
integrated with Day Night  
optical Camera

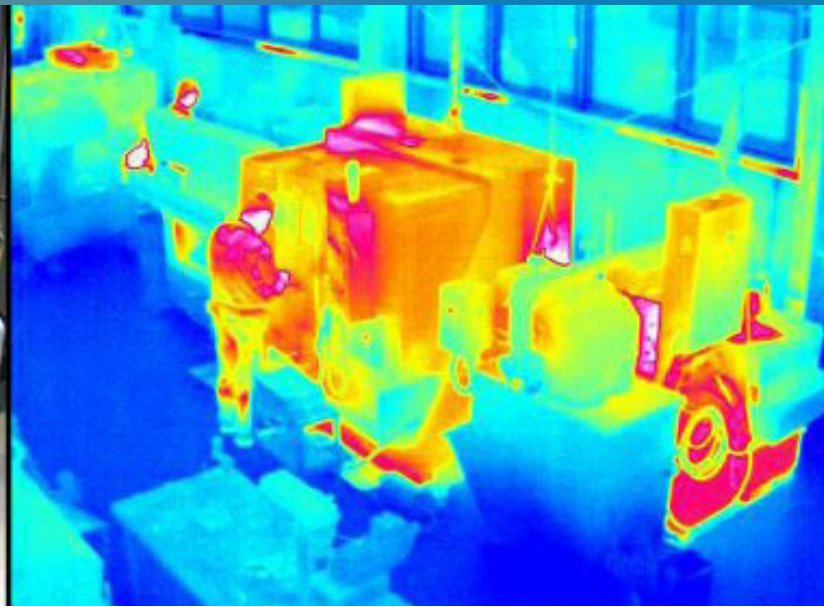
MOBOTIX Thermal image combined with high-contrast visual details can automatically switch from the thermal sensor to the optical sensor and generate high-resolution video for optimal viewing. This imager allows for monitoring temperatures and can automatically trigger temperature notifications and alarm events with differences as low as 0.1 °C.



## Key Features:

- **Mobotix M73 modular sensor camera** with TR Thermal radiometry, day night and motion sensor.
- **Calibrated thermal image sensor** used to trigger an event based on the temperature increasing above or decreasing below an individually set trigger level
- **Strong lightweight aircraft aluminum enclosure**, environmentally sealed whose components are industrialized for a long-lasting deployment in harsh conditions and temperatures of -20°~70°C; -4°~158°F
- **Solar radiation reflector** for reduced solar radiation heat transfer and cooler interior operating temperatures
- **Multiple Power inputs available** - 120VAC by default with higher power inputs available (240VAC, 277VAC, 440VAC, Solar, etc.) with short circuit, overload, over voltage and overtemperature protection
- **PoE Network Switch & Communications:** 4 Port PoE+ 90W 1G with 1 Uplink Port, 6kv Lightning Protection
- **Multiple cabling management options** – wire glands for direct cabling for power, wireless communication radios and multiple custom conduit opening options ½", ¾" & 1"
- **Exterior led power indicator light** for "from the ground" power source verification
- **Interior fused power disconnect bus**, lifetime warranty power supply providing conditioned power & surge suppression
- **Pole Mount & Surface Mount included**
- **¼ turn twist latch.** Keyed Lock(s) available

# Thermal Radiometry Alarm Heat Sensing Camera POD



## Specifications:

- **Part Number:** E-IOT-BASE-V-POD-MOB-SMART-CAM
- **Power Input:** 120VAC(Default), Options for Higher Voltages and Solar Power
- **Power Consumption:** 18W Average
- **Network Connectivity:** 1 Gbps Ethernet, Options for LTE, Wi-Fi, MM Wav & Fiber available
- **Storage:** Any VMS Software, Compatible Cloud VMS & microSDXC
- **Enclosure:** NEMA 4X Aluminum IP56
- **Operational Temperature:** -20°~70°C; -4°~158°F
- **Camera Resolution:** 1920x1080 to 160x90
- **Lens:** Q6000-qty 4 1.37mm 360° 4.44-142.6 mmVarifocal, 3.4-8.9 mm, F1.8 HFOV: 100°-36° VFOV: 53°-20°
- **Warranty:** 3 Years
- **Dimensions:** 21 X 12.5 X 31 IN.
- **Weight:** 38.6 LB.

## Additional Options:

- ✓ **LED Deterrent Lights**  
Blue, Green, Red or Amber LED Deterrent Lights as an option
- >240VAC, 277VAC or 200-500VAC Power Input Available**
- ✓ **Network Communication Options**  
*Standard* - Gigabit Ethernet 4PoE+ and 1 1G Ethernet Uplink Ethernet Switch
- ✓ *Optional Fiber* - Gigabit Ethernet 4PoE+ and 1 Ethernet Uplink & 1 SFP Fiber Switch
- Add Wireless P2P/P2MP Radios**  
Sub 6 GHz, 5G millimeter wave, LORA for low bandwidth sensors and many more options available. Cellular 4G/5G: we offer many industrialized cellular routers and antenna for AT&T, AT&T FirstNet, T-Mobile, Verizon, Sprint & Regional Carriers, or you can provide your own SIM card.

ISOsmartcity.com

ISO Network Contact:

✉ [sales@isosmartcity.com](mailto:sales@isosmartcity.com)

☎ (678) 885-9210

📍 2100 Barrett Park Drive, #508, Kennesaw, GA 30144

**ISO IoT Health Monitoring & Self-Healing Technology with or without SMA**

- ✓ Watchdog Self-healing technology with email notification when a sensor, connection or equipment becomes unresponsive. This option requires ISO Network Engineering and custom configuration.